



OUTFALL

30

John

ATTENDING MEMBERS				MEMBERS			
NAME	DES./DOC. NO.	REG. NO.	TITLE	NAME	DES./DOC. NO.	REG. NO.	TITLE
CLIENT : GOVERNMENT OF KARNATAKA DEVELOPMENT DEPARTMENT PROJECT TITLE : SPM 20 INTERPRETATION & DIVERSION WORKS				PROJECT NO. : 14			
				DRAWING NO. : 14			
DRAWING TITLE : PUMPING MAIN LAYOUT AT M. K. M. BELLUR (MURGAHA DISTRICT)				SCALE : 1:1000 DATE : 14/05/2014 BY :			



GROUND LEVEL

### STATIC HEAD

HGI

— PUBLIC INQUIRY LEVEL

579 425

2002

June

GREEN DESIGN &amp; ENGINEERING SERVICES PVT. LTD.

THE THICKNESS AND SIZE OF STRUCTURAL ELEMENTS ARE TENTATIVE.  
THE STRUCTURAL DRAWING SHALL BE RETURNED FOR ACTIVITY

GOVERNMENT OF KARNATAKA URBAN  
DEVELOPMENT DEPARTMENT

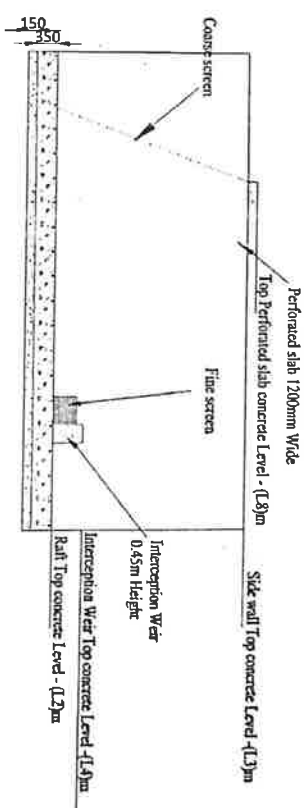
Section 923 - A



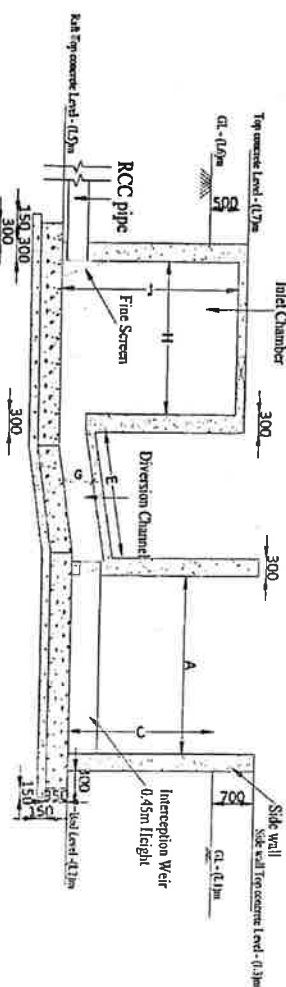
**EXECUTIVE ENGINEER**  
District Urban Development Cell  
By. Commissioner Office, Belagavi

THE THICKNESS AND SIZE OF STRUCTURAL ELEMENTS AND TENTATIVE THE STRUCTURAL DEPARTMENTS SHALL BE REVIEWED FOR ACTUALS.

[illegible]



## SECTION B-B OF INTERCEPTION & DIVERSION



## SECTION A-A OF INTERCEPTION & DIVERSION

S.No.	Modified Channel				Inlet Chamber			
	L1	L2	L3	L4	L5	L6	L7	L8
1	641.428 (m)	640.623 (m)	642.128 (m)	641.078 (m)	640.193 (m)	640.493 (m)	641.143 (m)	642.278 (m)

AGENTS AND SUBORDINATES

**Dist. Urban Development Cell**

**BY Commissioner Office, Belagavi**  
Internet Channel

18D to Met Well

## EXECUTIVE ENGINEER

Commissioner Office, Belagavi

I&D Module Sizing															ASSISTANT EXECUTIVE ENGINEER		
S.No.	Flow [MLD] [Average]	Modified Channel			Wing Wall	Diversion Channel			Dry Commissioning Channel					Dist. Urban Development Cell		EXECUTIVE ENGINEER	
		Width (mts)	Length (mts)	Depth (mts)		Length (mts)	Width (mts)	Length (mts)	Depth (mts)	Width (mts)	Length (mts)	Depth (mts)	Length (mts)	Diameter (mm)			
1	0.67	A	B	C	D	E	F	G	H	I	J	K	L	Dy. Commissioner Office, Belagavi	District Urban Development Cell	300	
		3.00	4.00	0.80	1.00	0.45	3.00	0.40	0.90	0.90	0.80	20.00					
															I&D to Wet Well		
															Dry Commissioning Channel		
															Office, Belagavi		
															District Urban Development Cell		

—

**GREEN DESIGN & ENGINEERING SERVICES PVT.LTD**

GOVERNMENT OF KARNATAKA (URBAN)  
DEVELOPMENT DEPARTMENT

SHEET NO. : 43

PROJECT TITLE:

## 2.0 LITERATURE & DIVERSION IDEAS

CHANGING TIME :

CONSTRUCTION & DIVISIONS LAURENT AT  
M. K. MURRAY (BILLYGAVI DISTRICT)

163901/DNA/38M/38Z/312/  
2024M.K.HU. BETA.16.D/04

DRAWING NUMBER
----------------

NO	2011-01-23		
----	------------	--	--

DRN	CAC	APP	DATE	REV
-----	-----	-----	------	-----


REFERENCE DRAWINGS	REV NO.	TITLE	CONTRACT
S/C NO	S/C/DOC. NO		GREEN DESIGN & ENGINEERING SERVICES PVT.LTD
PROJECT TITLE :			SHEET NO. : A1
GOVERNMENT OF KARNATAKA URBAN DEVELOPMENT DEPARTMENT			
DRAWING TITLE :			
SWM 2.0 INTERCEPTION & DRAINAGE BASINS			
DRAWING TITLE :			
INTERCEPTION & DRAINAGE LAYOUT AT M. H. BHALLI (BELLARANGA DISTRICT)			
SCALE	DRAWING NUMBER	DATE	REV
1:100000/75M/75M/75/212/	2024.M.H.100.BHLLI.1A/B/094	20.11.2023	N0

THE THICKNESS AND SIZE OF STRUCTURAL ELEMENTS AND TREATMENT. THE STRUCTURAL ELEMENTS SHALL BE DESIGNED FOR ACTUALS.

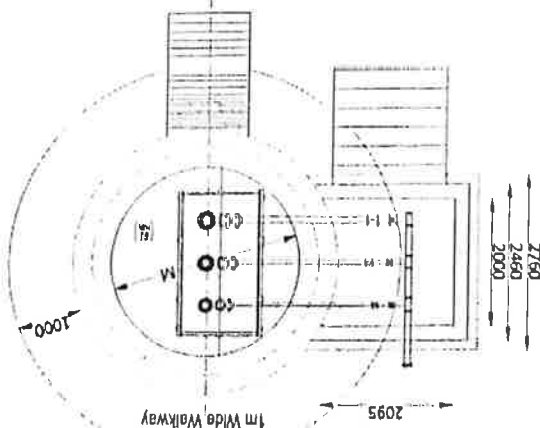
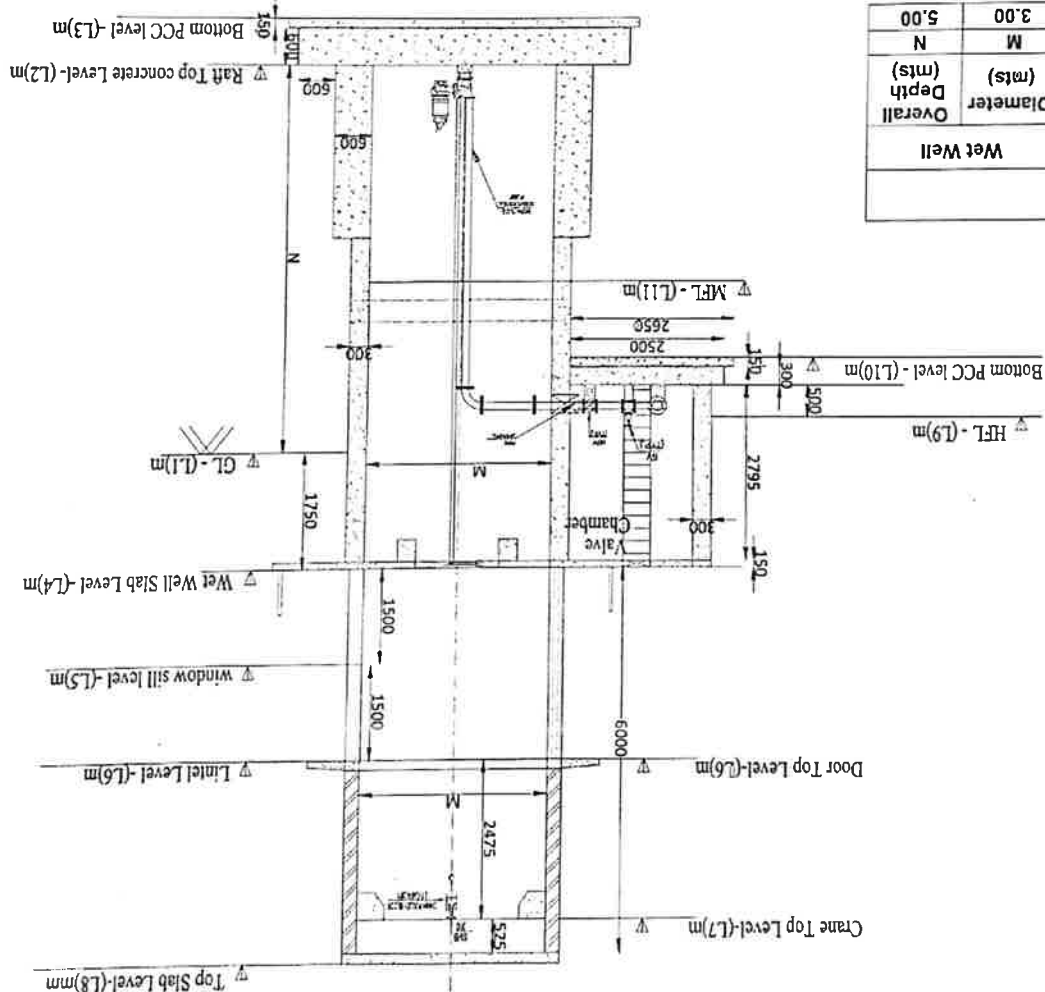
ALL INFORMATION CONTAINED  
HEREIN IS UNCLASSIFIED  
DATE 05-14-2010 BY 60322  
UCBAW/BJA

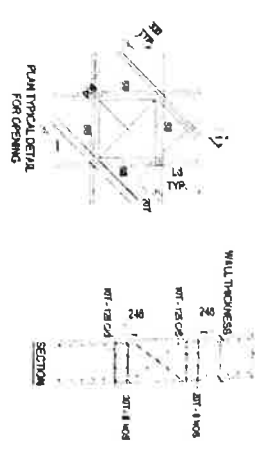
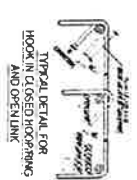
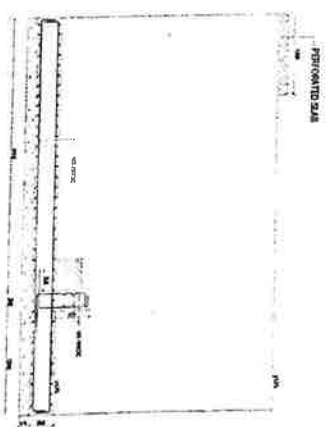
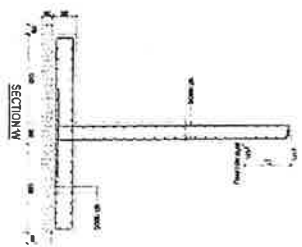
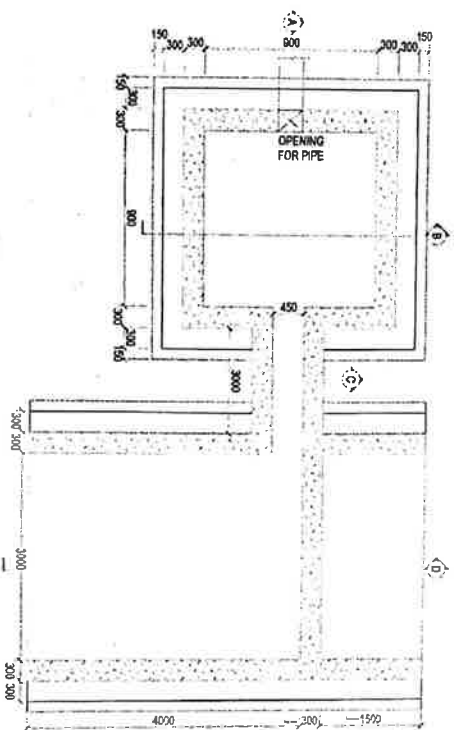
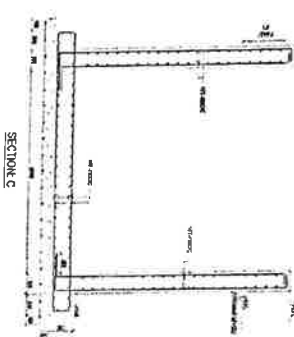
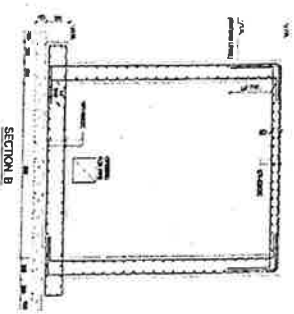
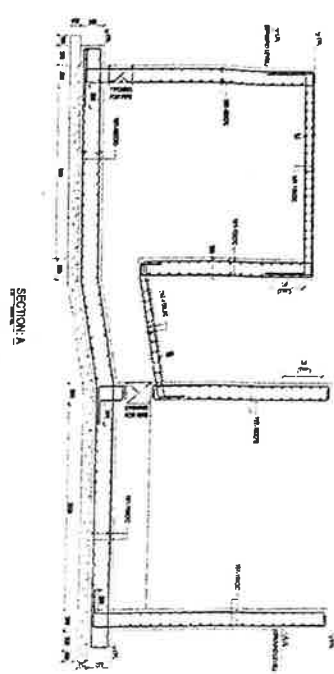
**ARE DUDC**

West Well

Plan and Section of Wet Well of 3.0m Dia

Wet Well	
Overall Diameter (mts)	M
Overall Depth (mts)	N
	3.00
	5.00





GENERAL NOTES:

1. ALL DIMENSIONS ARE IN MM. AND LEVELS ARE IN M.
2. ALL CONCRETE MIX FOR R.C.C. SHALL BE MIXED UP TO PLUMB.
3. 11. & ABOVE PLUMBING SHALL BE MIXED UP TO PLUMB.
4. 11. & ABOVE PLUMBING SHALL BE MIXED UP TO PLUMB.
5. 11. & ABOVE PLUMBING SHALL BE MIXED UP TO PLUMB.
6. 11. & ABOVE PLUMBING SHALL BE MIXED UP TO PLUMB.
7. 11. & ABOVE PLUMBING SHALL BE MIXED UP TO PLUMB.
8. 11. & ABOVE PLUMBING SHALL BE MIXED UP TO PLUMB.
9. 11. & ABOVE PLUMBING SHALL BE MIXED UP TO PLUMB.
10. 11. & ABOVE PLUMBING SHALL BE MIXED UP TO PLUMB.
11. 11. & ABOVE PLUMBING SHALL BE MIXED UP TO PLUMB.
12. 11. & ABOVE PLUMBING SHALL BE MIXED UP TO PLUMB.
13. 11. & ABOVE PLUMBING SHALL BE MIXED UP TO PLUMB.

FOR OPENING SIZE REFER GAD DRAWINGS.

10T	12T	14T	20T	25T	32T
-----	-----	-----	-----	-----	-----

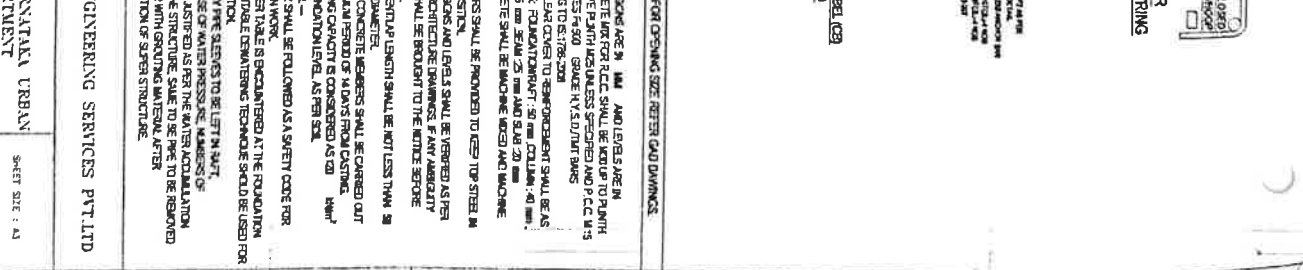
GREEN DESIGN & ENGINEERING SERVICES PVT.LTD

*Signature*

ASSISTANT EXECUTIVE ENGINEER  
Dist. Urban Development Cell  
Dy. Commissioner Office, Belagavi

EXECUTIVE ENGINEER  
District Urban Development Cell  
Dy. Commissioner Office, Belagavi

CLIENT :		GOVERNMENT OF KARNATAKA URBAN DEVELOPMENT DEPARTMENT		SHEET NO. : 12	
PROJECT :		DIST. URBAN DEVELOPMENT CELL		DATE :	
DESIGNER :		GREEN DESIGN & ENGINEERING SERVICES PVT.LTD		DATE :	
CHECKER :		D. K. SHARAD		DATE :	
APPROVED :		D. K. SHARAD		DATE :	
SCALE :		1:100		DATE :	
REVISION :		1. 10/10/2018		DATE :	
REVISION :		2. 10/10/2018		DATE :	
REVISION :		3. 10/10/2018		DATE :	
REVISION :		4. 10/10/2018		DATE :	
REVISION :		5. 10/10/2018		DATE :	
REVISION :		6. 10/10/2018		DATE :	
REVISION :		7. 10/10/2018		DATE :	
REVISION :		8. 10/10/2018		DATE :	
REVISION :		9. 10/10/2018		DATE :	
REVISION :		10. 10/10/2018		DATE :	
REVISION :		11. 10/10/2018		DATE :	
REVISION :		12. 10/10/2018		DATE :	
REVISION :		13. 10/10/2018		DATE :	
REVISION :		14. 10/10/2018		DATE :	
REVISION :		15. 10/10/2018		DATE :	
REVISION :		16. 10/10/2018		DATE :	
REVISION :		17. 10/10/2018		DATE :	
REVISION :		18. 10/10/2018		DATE :	
REVISION :		19. 10/10/2018		DATE :	
REVISION :		20. 10/10/2018		DATE :	

[illegible]

**EE DUDC  
BELAGAYI**

John

**GENERAL NOTES:**  
1. ALL DIMENSIONS ARE IN FEET AND INCHES.

2. ALL CONCRETE WORK SHALL BE DONE IN ACCORDANCE WITH THE SPECIFICATIONS FOR CONCRETE WORK IN THE 1995 EDITION OF THE ACI 308-115 TYPICAL SPECIFICATIONS FOR CONCRETE.
3. NORMAL CEMENT CEMENT TO PORTLAND CEMENT SHALL BE AS FOLLOWS: PORTLAND CEMENT, 50 MM DIALY, 40 MM, 45 MM, 50 MM, 55 MM, 60 MM, 65 MM, 70 MM, 75 MM, 80 MM, 85 MM, 90 MM, 95 MM, 100 MM, 105 MM, 110 MM, 115 MM, 120 MM, 125 MM, 130 MM, 135 MM, 140 MM, 145 MM, 150 MM, 155 MM, 160 MM, 165 MM, 170 MM, 175 MM, 180 MM, 185 MM, 190 MM, 195 MM, 200 MM, 205 MM, 210 MM, 215 MM, 220 MM, 225 MM, 230 MM, 235 MM, 240 MM, 245 MM, 250 MM, 255 MM, 260 MM, 265 MM, 270 MM, 275 MM, 280 MM, 285 MM, 290 MM, 295 MM, 300 MM, 305 MM, 310 MM, 315 MM, 320 MM, 325 MM, 330 MM, 335 MM, 340 MM, 345 MM, 350 MM, 355 MM, 360 MM, 365 MM, 370 MM, 375 MM, 380 MM, 385 MM, 390 MM, 395 MM, 400 MM, 405 MM, 410 MM, 415 MM, 420 MM, 425 MM, 430 MM, 435 MM, 440 MM, 445 MM, 450 MM, 455 MM, 460 MM, 465 MM, 470 MM, 475 MM, 480 MM, 485 MM, 490 MM, 495 MM, 500 MM, 505 MM, 510 MM, 515 MM, 520 MM, 525 MM, 530 MM, 535 MM, 540 MM, 545 MM, 550 MM, 555 MM, 560 MM, 565 MM, 570 MM, 575 MM, 580 MM, 585 MM, 590 MM, 595 MM, 600 MM, 605 MM, 610 MM, 615 MM, 620 MM, 625 MM, 630 MM, 635 MM, 640 MM, 645 MM, 650 MM, 655 MM, 660 MM, 665 MM, 670 MM, 675 MM, 680 MM, 685 MM, 690 MM, 695 MM, 700 MM, 705 MM, 710 MM, 715 MM, 720 MM, 725 MM, 730 MM, 735 MM, 740 MM, 745 MM, 750 MM, 755 MM, 760 MM, 765 MM, 770 MM, 775 MM, 780 MM, 785 MM, 790 MM, 795 MM, 800 MM, 805 MM, 810 MM, 815 MM, 820 MM, 825 MM, 830 MM, 835 MM, 840 MM, 845 MM, 850 MM, 855 MM, 860 MM, 865 MM, 870 MM, 875 MM, 880 MM, 885 MM, 890 MM, 895 MM, 900 MM, 905 MM, 910 MM, 915 MM, 920 MM, 925 MM, 930 MM, 935 MM, 940 MM, 945 MM, 950 MM, 955 MM, 960 MM, 965 MM, 970 MM, 975 MM, 980 MM, 985 MM, 990 MM, 995 MM, 1000 MM, 1005 MM, 1010 MM, 1015 MM, 1020 MM, 1025 MM, 1030 MM, 1035 MM, 1040 MM, 1045 MM, 1050 MM, 1055 MM, 1060 MM, 1065 MM, 1070 MM, 1075 MM, 1080 MM, 1085 MM, 1090 MM, 1095 MM, 1100 MM, 1105 MM, 1110 MM, 1115 MM, 1120 MM, 1125 MM, 1130 MM, 1135 MM, 1140 MM, 1145 MM, 1150 MM, 1155 MM, 1160 MM, 1165 MM, 1170 MM, 1175 MM, 1180 MM, 1185 MM, 1190 MM, 1195 MM, 1200 MM, 1205 MM, 1210 MM, 1215 MM, 1220 MM, 1225 MM, 1230 MM, 1235 MM, 1240 MM, 1245 MM, 1250 MM, 1255 MM, 1260 MM, 1265 MM, 1270 MM, 1275 MM, 1280 MM, 1285 MM, 1290 MM, 1295 MM, 1300 MM, 1305 MM, 1310 MM, 1315 MM, 1320 MM, 1325 MM, 1330 MM, 1335 MM, 1340 MM, 1345 MM, 1350 MM, 1355 MM, 1360 MM, 1365 MM, 1370 MM, 1375 MM, 1380 MM, 1385 MM, 1390 MM, 1395 MM, 1400 MM, 1405 MM, 1410 MM, 1415 MM, 1420 MM, 1425 MM, 1430 MM, 1435 MM, 1440 MM, 1445 MM, 1450 MM, 1455 MM, 1460 MM, 1465 MM, 1470 MM, 1475 MM, 1480 MM, 1485 MM, 1490 MM, 1495 MM, 1500 MM, 1505 MM, 1510 MM, 1515 MM, 1520 MM, 1525 MM, 1530 MM, 1535 MM, 1540 MM, 1545 MM, 1550 MM, 1555 MM, 1560 MM, 1565 MM, 1570 MM, 1575 MM, 1580 MM, 1585 MM, 1590 MM, 1595 MM, 1600 MM, 1605 MM, 1610 MM, 1615 MM, 1620 MM, 1625 MM, 1630 MM, 1635 MM, 1640 MM, 1645 MM, 1650 MM, 1655 MM, 1660 MM, 1665 MM, 1670 MM, 1675 MM, 1680 MM, 1685 MM, 1690 MM, 1695 MM, 1700 MM, 1705 MM, 1710 MM, 1715 MM, 1720 MM, 1725 MM, 1730 MM, 1735 MM, 1740 MM, 1745 MM, 1750 MM, 1755 MM, 1760 MM, 1765 MM, 1770 MM, 1775 MM, 1780 MM, 1785 MM, 1790 MM, 1795 MM, 1800 MM, 1805 MM, 1810 MM, 1815 MM, 1820 MM, 1825 MM, 1830 MM, 1835 MM, 1840 MM, 1845 MM, 1850 MM, 1855 MM, 1860 MM, 1865 MM, 1870 MM, 1875 MM, 1880 MM, 1885 MM, 1890 MM, 1895 MM, 1900 MM, 1905 MM, 1910 MM, 1915 MM, 1920 MM, 1925 MM, 1930 MM, 1935 MM, 1940 MM, 1945 MM, 1950 MM, 1955 MM, 1960 MM, 1965 MM, 1970 MM, 1975 MM, 1980 MM, 1985 MM, 1990 MM, 1995 MM, 2000 MM, 2005 MM, 2010 MM, 2015 MM, 2020 MM, 2025 MM, 2030 MM, 2035 MM, 2040 MM, 2045 MM, 2050 MM, 2055 MM, 2060 MM, 2065 MM, 2070 MM, 2075 MM, 2080 MM, 2085 MM, 2090 MM, 2095 MM, 2100 MM, 2105 MM, 2110 MM, 2115 MM, 2120 MM, 2125 MM, 2130 MM, 2135 MM, 2140 MM, 2145 MM, 2150 MM, 2155 MM, 2160 MM, 2165 MM, 2170 MM, 2175 MM, 2180 MM, 2185 MM, 2190 MM, 2195 MM, 2200 MM, 2205 MM, 2210 MM, 2215 MM, 2220 MM, 2225 MM, 2230 MM, 2235 MM, 2240 MM, 2245 MM, 2250 MM, 2255 MM, 2260 MM, 2265 MM, 2270 MM, 2275 MM, 2280 MM, 2285 MM, 2290 MM, 2295 MM, 2300 MM, 2305 MM, 2310 MM, 2315 MM, 2320 MM, 2325 MM, 2330 MM, 2335 MM, 2340 MM, 2345 MM, 2350 MM, 2355 MM, 2360 MM, 2365 MM, 2370 MM, 2375 MM, 2380 MM, 2385 MM, 2390 MM, 2395 MM, 2400 MM, 2405 MM, 2410 MM, 2415 MM, 2420 MM, 2425 MM, 2430 MM, 2435 MM, 2440 MM, 2445 MM, 2450 MM, 2455 MM, 2460 MM, 2465 MM, 2470 MM, 2475 MM, 2480 MM, 2485 MM, 2490 MM, 2495 MM, 2500 MM, 2505 MM, 2510 MM, 2515 MM, 2520 MM, 2525 MM, 2530 MM, 2535 MM, 2540 MM, 2545 MM, 2550 MM, 2555 MM, 2560 MM, 2565 MM, 2570 MM, 2575 MM, 2580 MM, 2585 MM, 2590 MM, 2595 MM, 2600 MM, 2605 MM, 2610 MM, 2615 MM, 2620 MM, 2625 MM, 2630 MM, 2635 MM, 2640 MM, 2645 MM, 2650 MM, 2655 MM, 2660 MM, 2665 MM, 2670 MM, 2675 MM, 2680 MM, 2685 MM, 2690 MM, 2695 MM, 2700 MM, 2705 MM, 2710 MM, 2715 MM, 2720 MM, 2725 MM, 2730 MM, 2735 MM, 2740 MM, 2745 MM, 2750 MM, 2755 MM, 2760 MM, 2765 MM, 2770 MM, 2775 MM, 2780 MM, 2785 MM, 2790 MM, 2795 MM, 2800 MM, 2805 MM, 2810 MM, 2815 MM, 2820 MM, 2825 MM, 2830 MM, 2835 MM, 2840 MM, 2845 MM, 2850 MM, 2855 MM, 2860 MM, 2865 MM, 2870 MM, 2875 MM, 2880 MM, 2885 MM, 2890 MM, 2895 MM, 2900 MM, 2905 MM, 2910 MM, 2915 MM, 2920 MM, 2925 MM, 2930 MM, 2935 MM, 2940 MM, 2945 MM, 2950 MM, 2955 MM, 2960 MM, 2965 MM, 2970 MM, 2975 MM, 2980 MM, 2985 MM, 2990 MM, 2995 MM, 3000 MM, 3005 MM, 3010 MM, 3015 MM, 3020 MM, 3025 MM, 3030 MM, 303

**TYPICAL DETAIL FOR  
HOOK IN CLOSED HOOPRING  
AND OPEN LINK**

300 X 700

SHEET SIZE : A1

2011-2012 K1

715	DEALING NUMBER
-----	----------------

M. K. HUGERLICH (BELLICANT DISTRICT)